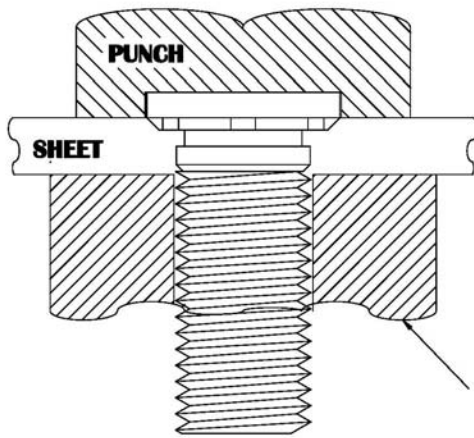
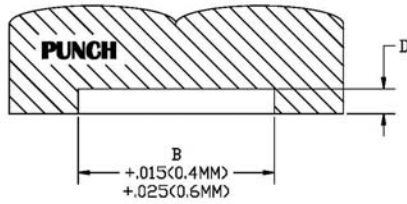


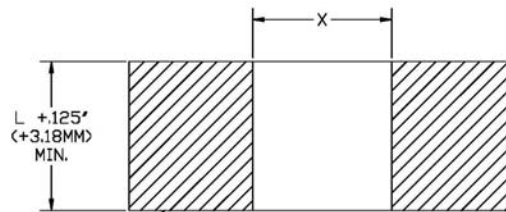
The sketch below indicates suggested tooling for type HCH Studs. The punch design below provides clearance for the stud head and reduces chances of over squeezing the stud into the sheet metal. When installed, the stud head is not flush but will protrude by the A dimension of the stud.

UNIFIED	THREAD CODE	PUNCH DIMENSIONS D (INCH)
	1032	.035 - .036
	420	.045 - .046
	518	.063 - .064
	616	.077 - .078

METRIC	THREAD CODE	PUNCH DIMENSIONS D (MM)
	M5	0.94 - 0.96
	M6	1.14 - 1.16
	M8	1.62 - 1.64
	M10	2.10 - 2.12



ASSEMBLY ANVIL



UNIFIED	THREAD CODE	ANVIL DIMENSIONS X (INCH)
	1032	.191 - .194
	420	.250 - .253
	518	.3125 - .3155
	616	.375 - .378

METRIC	THREAD CODE	ANVIL DIMENSIONS X (MM)
	M5	5.03 - 5.11
	M6	6.03 - 6.11
	M8	8.03 - 8.11
	M10	10.03 - 10.11