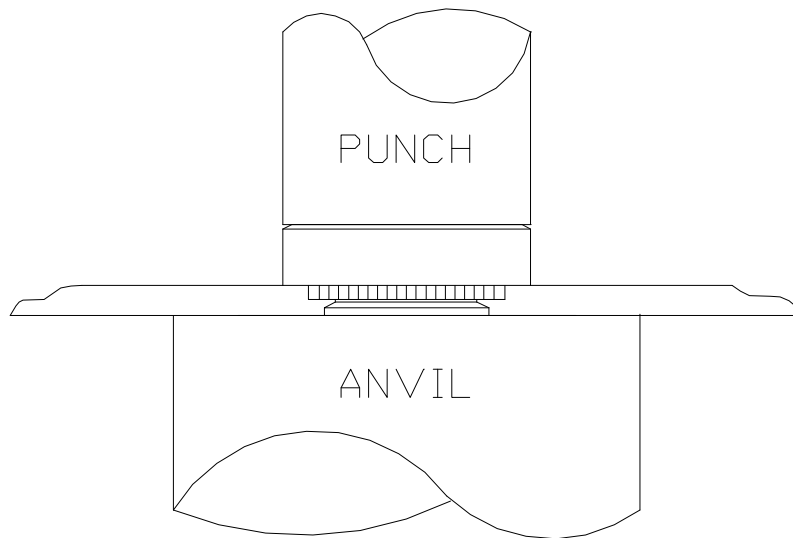
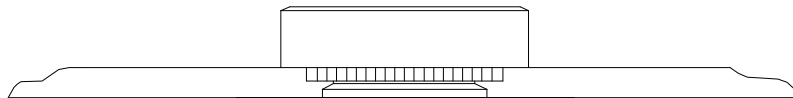


INSTALLATION OF CAPTIVE FASTENER C, CS NUTS

- Punch or drill correct size mounting hole in sheet material. Do not deburr or perform any secondary operations.
- Place pilot end of nut into mounting hole, preferably entering the punched side.
- With punch and anvil surfaces parallel, apply a steady squeezing force until flange contacts mounting sheet. See diagram that depicts suggested tooling for applying these forces.



APPLY FORCE TO HEAD OF NUT



INSTALL NUT SQUARELY IN THE THRU HOLE