

# MATERIAL & FINISH SPECIFICATIONS - CFT

TYPE	Threads	Materials			Standard Finishes			For use in Sheet Hardness of:		
	Internal, ANSI B1.1,2B ANSI/ASME B1.13M,6H	Non heat-treated Carbon Steel	300 Series Stainless Steel	7075-T6 Aluminum	Zinc Per ASTM B633 (SC1) Type III , Colorless	Passivated and/or tested per ASTM A380	None	HRB 60 or Less	HRB 70 of Less	HRB 50 or Less
CFT	•	•			•			•		
CFTS	•		•			•			•	
CFTA	•			•			•			•
Part Number Code for Finishes					ZI	None	None			

## PERFORMANCE DATA

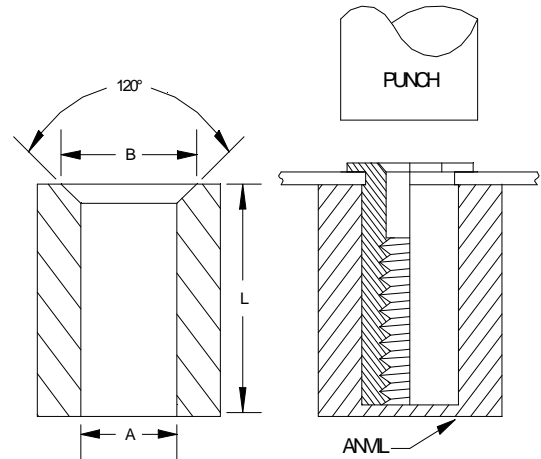
Standoff "C" Dimension	TYPE	Sheet Material											
		.025 /0.64mm 5052-H-34 Aluminum						.025/0.64mm Cold-rolled Steel					
		Installation		Pushout		Torque-Out		Installation		Pushout		Torque-Out	
		lbs	kN	lbs	N	In lbs	Nm	lbs	kN	lbs	N	In lbs	Nm
.165 4.19 mm	CFT	1500	6.7	70	311	6	0.68	2000	8.9	100	445	9	1
	CFTS	1500	6.7	70	311	6	.068	2000	8.9	100	445	9	1
	CFTA	1500	6.7	70	311	6	.068	-	-	-	-	-	-
.212 5.38 mm	CFT	1800	8	90	400	11	1.24	2500	11.1	150	667	15	1.7
	CFTS	1800	8	90	400	11	1.24	2500	11.1	150	667	15	1.7
	CFTA	1800	8	90	400	11	1.24	-	-	-	-	-	-

The Installation and pushout values reported are averages when all installation specifications and procedures are followed. Variation in mounting hole size, sheet material, and installation procedure will affect this data. Performance testing of this product in your application is recommended. We will be happy to provide representative samples for this purpose.

## INSTALLATION

1. Punch or drill properly sized hole in sheet. Do not perform any secondary operations such as deburring.
2. Insert standoff through mounting hole of sheet and into required installation anvil.
3. With punch and anvil surfaces parallel, apply only enough squeezing force to embed the standoff's head flush in the sheet drawing at right shows required installation anvil for sheet thickness of .025 to .032 / 0.63 to 0.81mm. A chamfered anvil is not required for sheets over .032/0.81mm.

Standoff C Dimension	Anvil Dimensions			
	A		B	
	Inches	mm	Inches	mm
.165/4.19mm	.167-.170	4.24-4.32	.187-.194	4.75-4.93
.212/5.38mm	.213-.216	5.41-5.49	.250-.257	6.35-6.53



## CAPTIVE FASTENER CORPORATION

19 THORNTON ROAD  
OAKLAND NJ 07436  
PHONE- 201-337-6800  
FAX - 201-337-1012  
[www.captive-fastener.com](http://www.captive-fastener.com)