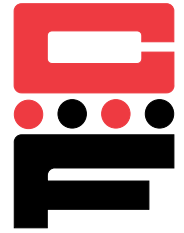




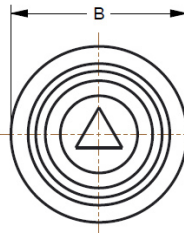
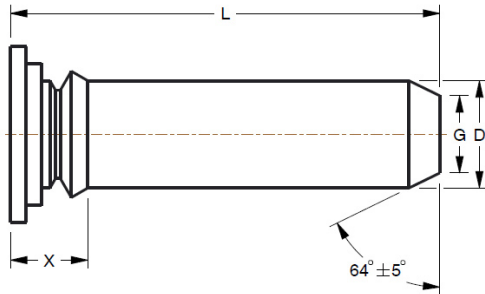
Self-Clinching Tapered Guide Pins

Series CGS (Tapered Guide Pins)



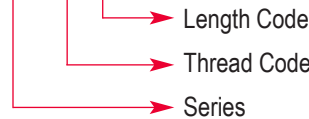
CGS Tapered Guide Pins provide a strong flush-head assembly in materials as thin as .040 in. (1mm) with high pushout resistance. A tapered end allows ease of locating mating hole in a variety of alignment and pivot applications.

Series	Material	Finish
CGS	300 Series Stainless Steel	Passivated ASTM A967



Use in: Materials with Rockwell Hardness of B-70 or less.

Part Number Structure:
CGS-125-8



Dimensions & Specifications

INCH (in.)	Pin Dia. D ±.002	L Length ±.015 in.					B ±.015	X Max.	G ±.006	Min.	Min.	Min.
		.375	.500	.625	.750	1.00						
.125		-6	-8	-10	-12		.205	.090	.090	.040	.144	.250
.187		-6	-8	-10	-12	-16	.270	.090	.132	.040	.205	.280
.250			-8	-10	-12	-16	.335	.090	.177	.040	.272	.310

METRIC (mm)	Pin Dia. D ±.05	L Length ±.4mm					B ±.4	X Max.	G ±.15	Min.	Min.	Min.
		8	10	12	16	20						
3mm		-8	-10	-12	-16		5.2	2.29	2.05	1	3.5	6.4
4mm		-8	-10	-12	-16		6.12	2.29	2.82	1	4.5	7.1
5mm			-10	-12	-16	-20	7.19	2.29	3.53	1	5.5	7.6
6mm				-12	-16	-20	8.13	2.29	4.24	1	6.5	7.9

Installation & Performance Data

INCH (in.)	Pin Dia. D ±.002	Test Material	Sheet Hardness HRB	Installation (lbs.)	Pushout (lbs.)	METRIC (mm)	Pin Dia. D ±.05	Test Material	Sheet Hardness HRB	Installation (kN)	Pushout (kN)
	Steel	62	6500	250		Steel	65	22	.98		
.187	Aluminum	18	6500	230	4mm	Aluminum	19	22	.89		
	Steel	60	8000	400		Steel	66	26.4	1.54		
.250	Aluminum	18	7000	270	5mm	Aluminum	18	28.6	1.01		
	Steel	62	9000	500		Steel	60	35.2	1.76		
					6mm	Aluminum	18	30.8	1.1		
						Steel	62	39.6	2.1		