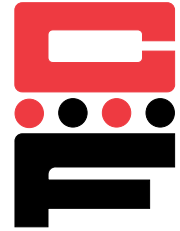


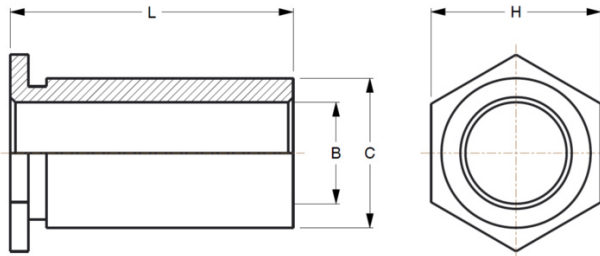


# Self-Clinching Unthreaded Thru-Hole Standoffs

## Series CFSO, CFSOS & CFSOA



CFSO self-clinching standoffs are designed for quick, simple installation with any standard press into a drilled or punched hole, and become permanently attached to the thin sheet metal material. They are primarily used to provide spacing of multi-panel assemblies. The unthreaded hole allows threaded studs to pass directly through the spacer to lower areas.



Series	Material	Finish
CFSO	Heat-treated Carbon Steel	Zinc* Clear
CFSOS	300 Series Stainless Steel	Passivated ASTM A967
CFSOA	7075-T6 Aluminum	None

\*See Finish Spec. on Page 6.

Use in: CFSO for materials with Rockwell Hardness of B-80 or less.

CFSOS for materials with Rockwell Hardness of B-70 or less.

CFSOA for materials with Rockwell Hardness of B-50 or less.

Part Number Structure:

CFSO 4116-4



All Measurements In Inches.

### Dimensions & Specifications

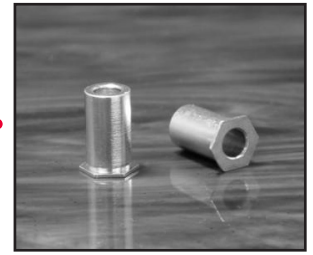
B +.004 -.003 Thru-Hole Diameter	Part Number	L Length +.002 -.005 in.											C +.003 -.000	H +.000 -.005 Hex Dim.	Min.	Min.	
		.125	.187	.250	.312	.375	.437	.500	.562	.625	.687	.750					
.116	CFSO 4116	-4	-6	-8	-10	-12	-14	-16	-18	-20	-22	-24	.166	.165	.187	.23	.040
	CFSOS 4116	-4	-6	-8	-10	-12	-14	-16	-18	-20	-22	-24					
	CFSOA 4116	-4	-6	-8	-10	-12	-14	-16	-18	-20	-22	-24					
.116	CFSO 6116	-4	-6	-8	-10	-12	-14	-16	-18	-20	-22	-24	.213	.212	.250	.27	.040
	CFSOS 6116	-4	-6	-8	-10	-12	-14	-16	-18	-20	-22	-24					
	CFSOA 6116	-4	-6	-8	-10	-12	-14	-16	-18	-20	-22	-24					
.143	CFSO 6143	-4	-6	-8	-10	-12	-14	-16	-18	-20	-22	-24	.213	.212	.250	.27	.040
	CFSOS 6143	-4	-6	-8	-10	-12	-14	-16	-18	-20	-22	-24					
	CFSOA 6143	-4	-6	-8	-10	-12	-14	-16	-18	-20	-22	-24					
.143	CFSO 8143	-4	-6	-8	-10	-12	-14	-16	-18	-20	-22	-24	.281	.280	.312	.31	.050
	CFSOS 8143	-4	-6	-8	-10	-12	-14	-16	-18	-20	-22	-24					
	CFSOA 8143	-4	-6	-8	-10	-12	-14	-16	-18	-20	-22	-24					
.169	CFSO 8169	-4	-6	-8	-10	-12	-14	-16	-18	-20	-22	-24	.281	.280	.312	.31	.050
	CFSOS 8169	-4	-6	-8	-10	-12	-14	-16	-18	-20	-22	-24					
	CFSOA 8169	-4	-6	-8	-10	-12	-14	-16	-18	-20	-22	-24					
.194	CFSO 8194	-4	-6	-8	-10	-12	-14	-16	-18	-20	-22	-24	.281	.280	.312	.31	.050
	CFSOS 8194	-4	-6	-8	-10	-12	-14	-16	-18	-20	-22	-24					
	CFSOA 8194	-4	-6	-8	-10	-12	-14	-16	-18	-20	-22	-24					

Continued on next page.

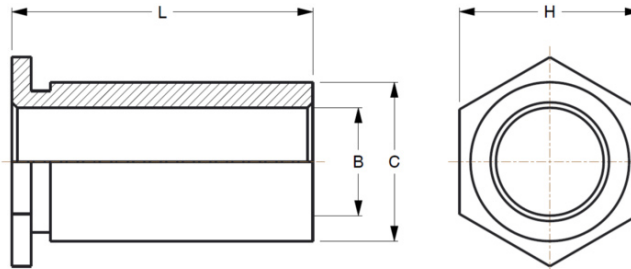


# Self-Clinching Unthreaded Thru-Hole Standoffs

## Series CFSO, CFSOS & CFSOA

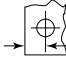
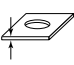


Continued from previous page.



All Measurements In Millimeters.

### Dimensions & Specifications

B +.10 -.08 Thru-Hole Diameter	Part Number	L Length +.05 -.13 mm										+08 -.00	C +.00 -.13	H Hex Dim.	 Min.	 Min.
		3	4	6	8	10	12	14	16	18	20					
3.1	CFSO	-3	-4	-6	-8	-10	-12	-14	-16	-18	-20	4.22	4.19	4.8	6	1.02
	CFSOS 43.1	-3	-4	-6	-8	-10	-12	-14	-16	-18	-20					
	CFSOA	-3	-4	-6	-8	-10	-12	-14	-16	-18	-20					
3.1	CFSO	-3	-4	-6	-8	-10	-12	-14	-16	-18	-20	5.41	5.38	6.4	6.8	1.02
	CFSOS 63.1	-3	-4	-6	-8	-10	-12	-14	-16	-18	-20					
	CFSOA	-3	-4	-6	-8	-10	-12	-14	-16	-18	-20					
3.6	CFSO	-3	-4	-6	-8	-10	-12	-14	-16	-18	-20	5.41	5.38	6.4	6.8	1.02
	CFSOS 63.6	-3	-4	-6	-8	-10	-12	-14	-16	-18	-20					
	CFSOA	-3	-4	-6	-8	-10	-12	-14	-16	-18	-20					
3.6	CFSO	-3	-4	-6	-8	-10	-12	-14	-16	-18	-20	7.14	7.11	7.9	8	1.27
	CFSOS 83.6	-3	-4	-6	-8	-10	-12	-14	-16	-18	-20					
	CFSOA	-3	-4	-6	-8	-10	-12	-14	-16	-18	-20					
4.1	CFSO	-3	-4	-6	-8	-10	-12	-14	-16	-18	-20	7.14	7.11	7.9	8	1.27
	CFSOS 84.1	-3	-4	-6	-8	-10	-12	-14	-16	-18	-20					
	CFSOA	-3	-4	-6	-8	-10	-12	-14	-16	-18	-20					
5.1	CFSO	-3	-4	-6	-8	-10	-12	-14	-16	-18	-20	7.14	7.11	7.9	8	1.27
	CFSOS 85.1	-3	-4	-6	-8	-10	-12	-14	-16	-18	-20					
	CFSOA	-3	-4	-6	-8	-10	-12	-14	-16	-18	-20					