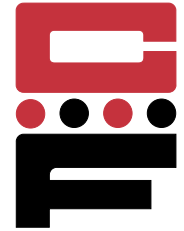
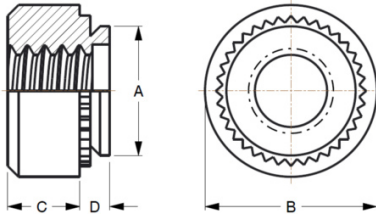


# Self-Clinching Aluminum Nuts



## Series CA-Aluminum

CA aluminum self-clinching nuts provide strong load-bearing threads. All Captive Fastener self-clinching nuts fit standard hole sizes and are dimensionally identical to industry standards.



Series	Material	Finish
CA	2024-T4 Aluminum	None

Thread: Internal 2B, ANSI B1.1 (6H, ANSI/ASME B1.13M).  
Use in: Materials with Rockwell Hardness of B-50 or less.

### Dimensions & Specifications

	Thread Size	Part Number	D Max.	Min.	+0.003 in. (+.08 mm) -0.000 (-.00)	A Max.	B ±.01 in. (±.25 mm)	C ±.01 in. (±.25 mm)	Min.
INCH (in.)	#2-56	CA256-1	.038	.040	.166	.165	.25	.07	.19
		CA256-2	.054	.056					
	#4-40	CA440-1	.038	.040	.1875	.187	.25	.09	.22
		CA440-2	.054	.056					
	#6-32	CA632-1	.038	.040	.213	.212	.28	.09	.27
		CA632-2	.054	.056					
	#8-32	CA832-1	.038	.040	.234	.233	.31	.13	.28
		CA832-2	.054	.056					
	#10-24	CA1024-1	.038	.040	.296	.295	.370	.16	.31
		CA1024-2	.054	.056					
#10-32	CA1032-1	.038	.040						
	CA1032-2	.054	.056						
1/4-20	CA420-1	.054	.056	.344	.343	.44	.17	.34	
	CA420-2	.087	.091						
	CA420-3	.120	.125						
METRIC (mm)	M2 x 0.4	CAM2-1	.98	1.0	4.22	4.2	6.35	1.5	4.8
		CAM2-2	1.38	1.4					
	M3 x 0.5	CAM3-1	.98	1.0	4.75	4.73	6.35	2.0	5.6
		CAM3-2	1.38	1.4					
	M3.5 x 0.6	CAM3.5-1	.98	1.0	5.41	5.38	7.11	2.0	6.9
		CAM3.5-2	1.38	1.4					
	M4 x 0.7	CAM4-1	.98	1.0	5.94	5.92	7.8	3.0	7.1
		CAM4-2	1.38	1.4					
	M5 x 0.8	CAM5-1	.98	1.0	7.52	7.49	9.4	3.8	7.9
		CAM5-2	1.38	1.4					
	M6 x 1.0	CAM6-1	1.38	1.4	8.75	8.73	11.18	4.08	8.6
		CAM6-2	2.21	2.3					