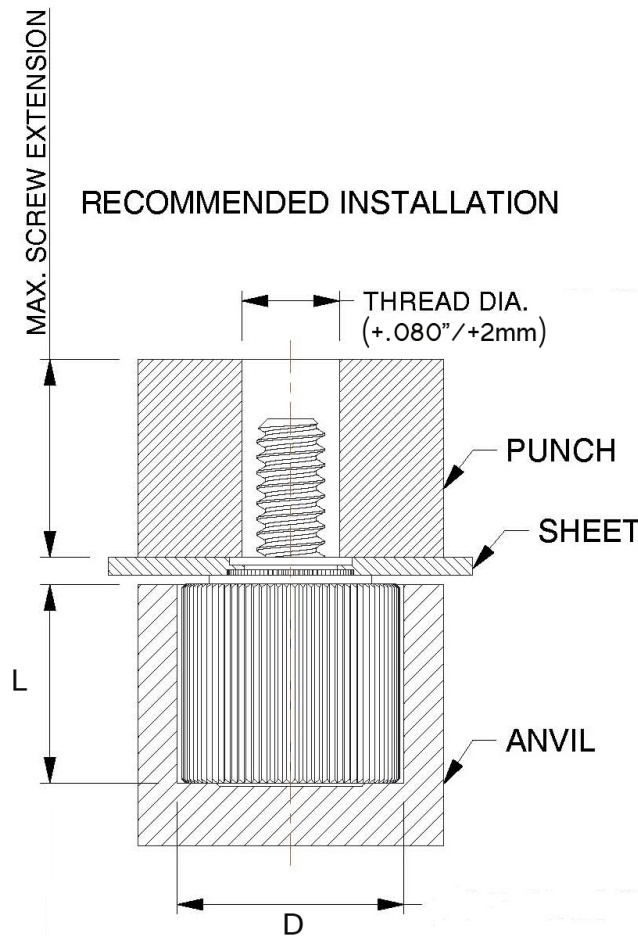


**captive
fastener
corporation**

INSTALLATION OF CAPTIVE FASTENER PSK/PSS

- Punch or drill correct sized mounting hole in board.
- Place fastener into the anvil as shown
- With punch and anvil surfaces parallel, apply a steady squeezing force until shoulder of the retainer squarely contacts the sheet metal.



Unified	Thread Code	"D" ±0.002	"L" ±0.002
	440	0.260	0.437
	632	0.390	0.468
	832	0.390	0.531
	1032	0.390	0.531
	0420	0.480	0.598

Metric	Thread Code	"D" ±0.05	"L" ±0.05
	M3	6.60	11.10
	M3.5	9.91	11.89
	M4	9.91	13.49
	M5	9.91	13.49
	M6	12.19	15.19