

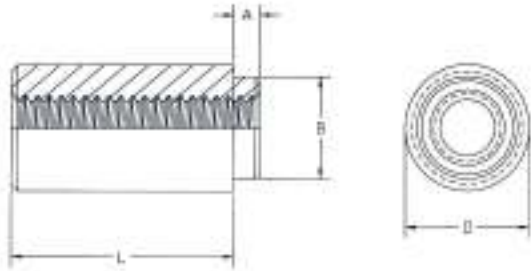


Reel Mounted Spacers and Nuts



Series CRM

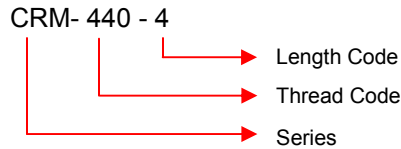
CRM Reel Mount nuts and spacers provide a low-installed-cost solution for surface mount hardware. The fasteners are fed from a recyclable reel using "pick and place" equipment and oriented prior to the wave soldering operation



Series	Material	Finish
CRM	Carbon Steel	Electro Tin Plated, ASTM B545, Class A w/ Preservative Coating

Thread: Internal 2B, ANSI B1.1 (6H, ANSI/ASME B1.13M).

Part Number Structure:



Dimensions & Specifications

INCH (in.)	Thread Size	Series	Thread Code	Thru Hole + .004 - .003	L Length \pm .005 in.				A Max.	Min. Sheet Thickness	Hole Size In Sheet + .003 - .000	B Max.	D \pm .005	Min. Solder Pad ϕ		
					.062	.125	.250	.375								
	#2-56	CRM	256		-2	-4	-8	-12	.060	.060	.147	.142	.219	.244		
	#4-40	CRM	440		-2	-4	-8	-12	.060	.060	.166	.161	.219	.244		
	#6-32	CRM	632		-2	-4	-8	-12	.060	.060	.213	.208	.281	.306		
	#8-32	CRM	832		-2	-4	-8	-12	.060	.060	.250	.245	.344	.369		
		CRM		.116	-2	-4	-8	-12	.060	.060	.166	.161	.219	.244		
		CRM		.143	-2	-4	-8	-12	.060	.060	.213	.208	.281	.306		
METRIC (mm)	Thread Size	Series	Thread Code	Thru Hole + 0.01 - 0.08	L Length \pm 0.13 mm						A Max	Min. Sheet Thickness	Hole Size In Sheet +0.08 -0.00	B Max.	D \pm 0.13	Min. Solder Pad ϕ
					2	3	4	6	8	10						
	M2 X 0.4	CRM	M2		-2	-3	-4	-6	-8	-10	1.53	1.53	3.73	3.6	5.56	6.2
	M2.5 X 0.45	CRM	M2.5		-2	-3	-4	-6	-8	-10	1.53	1.53	4.22	4.09	5.56	6.2
	M3 X 0.5	CRM	M3		-2	-3	-4	-6	-8	-10	1.53	1.53	4.22	4.09	5.56	6.2
	M3.5 X 0.6	CRM	M3.5		-2	-3	-4	-6	-8	-10	1.53	1.53	5.41	5.28	7.14	7.77
	M4 X 0.7	CRM	M4		-2	-3	-4	-6	-8	-10	1.53	1.53	6.35	6.22	8.74	9.37
		CRM		3.6	-2	-3	-4	-6	-8	-10	1.53	1.53	5.41	5.28	7.14	7.77
		CRM		4.2	-2	-3	-4	-6	-8	-10	1.53	1.53	6.35	6.22	8.74	9.37

Note: All Items Subject To Minimum Order

Number of Parts per Reel / Pitch (mm) for Each Size – as per EIA standards (13" reels/24mm wide)

Thread Size & Thru Hole Size	Length						
	2	3	4	6	8	10	12
256, 440, 632, .116, .143	1500 / 12	--	1000 / 12	--	650 / 12	--	300 / 16
832	1100 / 16	--	800 / 16	--	500 / 16	--	300 / 16
M2, M2.5, M3, M3.5, 3.6	1500 / 12	1000 / 12	900 / 12	650 / 12	375 / 16	300 / 16	--
M4, 4.2	1100 / 16	800 / 16	675 / 16	500 / 16	375 / 16	300 / 16	--