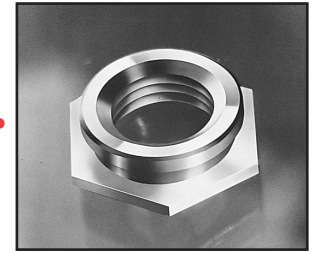




Self-Clinching Flush Nuts

Series CFL



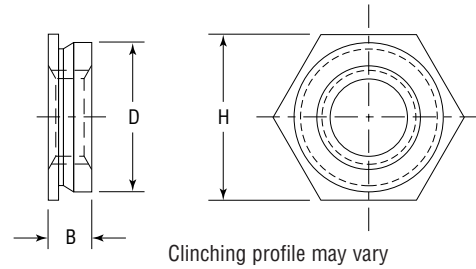
CFL flush nuts offer the advantage of being completely flush within the sheet while providing load-bearing threads in materials too ductile to tap. Captive Fastener flush nuts fit standard sizes and are otherwise dimensionally identical to industry standards.

Material: 300 Series Stainless Steel.

Finish: Passivated ASTM A380.

Thread: Class 2B, MIL-S-7742; (6H ISO metric).

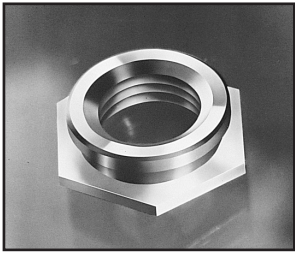
Use in: Materials with Rockwell Hardness of B-70 or less.



Dimensions & Specifications

Thread Size	Part Number	D Max.	Min.		H Nom.	B Max.	Min.
			Min.	+ .003 in. (.08 mm) - .000			
INCH (in.)	#2-56	.171	.061	.172	.1875	.060	.23
			.091				
	#4-40	.171	.061	.172	.1875	.060	.23
			.091				
	#6-32	.212	.061	.213	.25	.060	.27
			.091				
	#8-32	.289	.061	.290	.3125	.060	.28
			.091				
	#10-24	.311	.061	.312	.3438	.060	.31
			.091				
	#10-32	.311	.061	.312	.3438	.060	.31
			.091				
	1/4-20	.343	.126	.344	.375	.120	.34
			.156				
.187							
1/4-28	.343	.126	.344	.375	.120	.34	
		.156					
		.187					
METRIC (mm)	M2 x 0.5	4.34	1.5	4.4	4.8	1.5	6.0
			2.3				
	M2.5 x 0.5	4.34	1.5	4.4	4.8	1.5	6.0
			2.3				
	M3 x 0.5	4.34	1.5	4.4	4.8	1.5	6.0
			2.3				
	M3.5 x 0.5	5.35	1.5	5.4	6.4	1.5	6.5
			2.3				
	M4 x 0.7	7.34	1.5	7.4	7.94	1.5	7.2
			2.3				
	M5 x 0.8	7.87	1.5	7.9	8.73	1.5	8.0
			2.3				
	M6 x 1.0	8.71	3.2	8.75	9.53	3.1	8.8
			4.0				
4.75							

Continued on next page.



Self-Clinching Flush Nuts

Series CFL



Continued from previous page.

Installation & Performance Data

	Part Number	Max. Screw torque (in.-lbs.)	Cold-rolled Steel		5052-H34 Aluminum	
			Installation Force (tons)	Pushout (lbs.)	Installation Force (tons)	Pushout (lbs.)
INCH (in.)	CFL256-1	1.5	1.5	200	1	200
	CFL256-2	1.5	1.5	200	1	200
	CFL440-1	2.5	1.5	200	1	200
	CFL440-2	2.5	1.5	200	1	200
	CFL632-1	3.5	1.5	200	1	200
	CFL632-2	3.5	1.5	200	1	200
	CFL832-1	5.25	2	240	1	240
	CFL832-2	5.25	2	240	1	240
	CFL1024-1	7.5	2	240	1.5	240
	CFL1024-2	7.5	2	240	1.5	240
	CFL1032-1	7.5	2	240	1.5	240
	CFL1032-2	7.5	2	240	1.5	240
	CFL420-3	35	2.25	840	1.75	640
	CFL420-4	35	2.25	840	1.75	640
	CFL420-5	35	2.25	840	1.75	640
	CFL428-3	35	2.25	840	1.75	640
	CFL428-4	35	2.25	840	1.75	640
	CFL428-5	35	2.25	840	1.75	640
METRIC (mm)	CFLM2-1	0.16	13.3	0.9	8.9	0.9
	CFLM2-2	0.16	13.3	0.9	8.9	0.9
	CFLM2.5-1	0.23	13.3	0.9	8.9	0.9
	CFLM2.5-2	0.23	13.3	0.9	8.9	0.9
	CFLM3-1,2	0.3	13.3	0.9	8.9	0.9
	CFLM3.5-1,2	0.4	15	1.0	8.9	0.9
	CFLM4-1,2	0.5	17	1.1	8.9	1.0
	CFLM5-1,2	0.8	17	1.1	11	1.1
	CFLM6-3,4,5	3.7	20	3.7	15	2.8