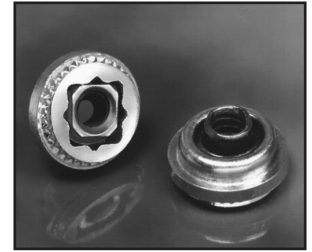


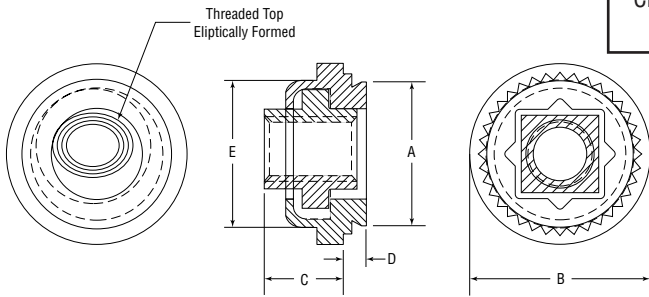


Floating Locking Clinch Nuts

Series CFFS & CFFC



CFFS & CFFC floating clinch nuts provide a self-clinching fastener with a floating nut that compensates for mating misalignments to 0.030 inches (.8 mm) and provides prevailing torque for the mating screw equivalent to MIL-N-250-27 specifications.



STARBURST® design indicates genuine Captive self-clinching Floating Nut.

Series	Material		Finish	
	Body	Nut	Body	Nut
CFFS	Heat-treated Carbon Steel	300 Series Stainless Steel	Zinc* Clear	Black Dry Film Lubricant** over Cadmium Chromate
CFFC	300 Series Stainless Steel	300 Series Stainless Steel	Passivated ASTM A380	Black Dry Film Lubricant** over Cadmium Chromate

*Spec. ASTM B633-85
** Spec. MIL-L-46010

Thread: Self Locking Internal: ANSI B1.1, 3B / ANSI / ASME B1.13M; (6H ISO metric).

Float: .015 in. (.4mm) minimum in all directions from center, 0.030 in. (.8mm) total.

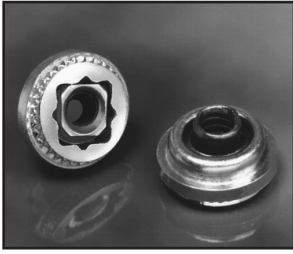
Use in: Materials with Rockwell Hardness of B-70 or less.

Dimensions & Specifications

Thread Size	Part Number		D Max.	Min.	+.003 in. (.08mm) -.000	A Max.	E Max.	B ± .015 in. (± 0.4mm)	C Max.	Min.
	Carbon Steel	Stainless Steel								
#4-40	CFFS440-1	CFFC440-1	.038	.040	.290	.289	.290	.36	.19	.30
	CFFS440-2	CFFC440-2	.054	.056						
#6-32	CFFS632-1	CFFC632-1	.038	.040	.328	.327	.335	.39	.20	.32
	CFFS632-2	CFFC632-2	.054	.056						
#8-32	CFFS832-1	CFFC832-1	.038	.040	.368	.367	.365	.44	.21	.34
	CFFS832-2	CFFC832-2	.054	.056						
#10-24	CFFS1024-1	CFFC1024-1	.038	.040	.406	.405	.405	.47	.27	.36
	CFFS1024-2	CFFC1024-2	.054	.056						
#10-32	CFFS1032-1	CFFC1032-1	.038	.040	.406	.405	.405	.47	.27	.36
	CFFS1032-2	CFFC1032-2	.054	.056						
1/4-20	CFFS420-2†	CFFC420-2†	.054	.056	.515	.514	.510	.60	.31	.42
1/4-28	CFFS428-2†	CFFC428-2†	.054	.056						
M3 x 0.5	CFFSM3-1	CFFCM3-1	0.97	1.0	7.4	7.34	7.4	9.1	4.8	7.6
	CFFSM3-2	CFFCM3-2	1.37	1.4						
M4 x 0.7	CFFSM4-1	CFFCM4-1	0.97	1.0	9.4	9.32	9.3	11.2	5.3	8.6
	CFFSM4-2	CFFCM4-2	1.37	1.4						
M5 x 0.8	CFFSM5-1	CFFCM5-1	0.97	1.0	10.3	10.29	10.3	11.9	6.8	9.0
	CFFSM5-2	CFFCM5-2	1.37	1.4						
M6 x 1.0	CFFSM6-2†	CFFCM6-2†	1.37	1.4	13.1	13.06	13.0	15.3	7.9	11.0

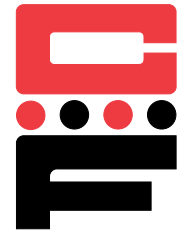
All items subject to minimum order requirements.
†Not stocked, available on special order.

Continued on next page.



Floating Locking Clinch Nuts

Series CFFS & CFFC



Continued from previous page

Installation & Performance Data

Thread Size	Shank	Cold-rolled Steel			2024-T3 Aluminum			5052-H34 Aluminum			
		Installation Force (tons)	Pushout (lbs.)	Torque-out (in.-lbs.)	Installation Force (tons)	Pushout (lbs.)	Torque-out (in.-lbs.)	Installation Force (tons)	Pushout (lbs.)	Torque-out (in.-lbs.)	
INCH (in.)	#4-40	-1	1 – 2	300	85	1 – 2	220	65	.5 – .75	215	65
		-2	1 – 2	300	150	1 – 2	225	150	1	225	80
	#6-32	-1	1 – 2	300	150	1 – 2	235	110	1	240	140
		-2	1 – 2	300	175	1 – 2	275	150	1	250	150
	#8-32	-1	1 – 2	300	150	1 – 2	240	110	1	250	140
		-2	1 – 2	400	200	1 – 2	300	150	1	265	150
	#10-24	-1	1	400	150	1 – 2	300	150	1	300	150
		-2	2	450	200	1 – 2	300	200	1	350	175
#10-32	-1	2	400	150	1 – 2	300	150	1	300	150	
	-2	2	450	200	1 – 2	300	200	1	350	175	
1/4-20 1/4-28	-2	2 – 3	500	325	2 – 3	300	325	1 – 2	400	325	
Thread Size	Shank	Installation Force (kN)	Pushout (N)	Torque-out (N•m)	Installation Force (kN)	Pushout (N)	Torque-out (N•m)	Installation Force (kN)	Pushout (N)	Torque-out (N•m)	
METRIC (mm)	M3	1	13	1330	9	13	970	7	7	950	9
		2	13	1330	16	13	1000	17	9	1000	17
	M4	1	13	1330	16	13	1050	12	9	1100	17
		2	13	1775	22	13	1330	17	9	1178	22
	M5	1	15	1775	16	15	1330	17	9	1330	17
		2	15	2000	22	15	1550	22	9	1550	19
M6	2	22	2220	36	22	1330	36	13	1780	36	