

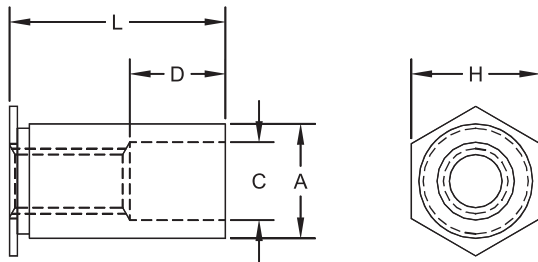
Self-Clinching Standoffs

Series CF4-SO

(400 Series Standoffs)



CF4-SO Standoffs are designed to be pressed into round holes in stainless steel material as thin as .040 (1mm). The through-hole versions are available in a choice of inch and metric sizes.



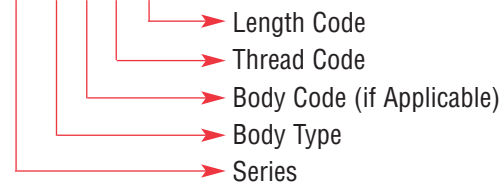
Through Threads

Series	Material	Finish
CF4-SO	400 Series Stainless Steel	Passivated ASTM A380

Thread: Internal 2B, ANSI B1.1 (6H, ANSI/ASME B1.13M).
Use in: Materials with Rockwell Hardness of B88 or less.

Part Number Structure:

CF4-SO 6440-4



All Measurements In Inches.

Dimensions & Specifications

Thread Size	Part Number	L Length +.002 -.005 in.																A Dim. +.000 -.005	H Hex Dim. (Nom.)	C Counter-bore ±.005	Min.	Min.	
		.125	.187	.250	.312	.375	.437	.500	.562	.625	.687	.750	.812	.875	.937	1.00	1.062						
#4-40	CF4-SO 440	-4	-6	-8	-10	-12	-14	-16	-18	-20	-22	-24						.166	.165	.187	.125	.23	.040
	CF4-SO 6440	-4	-6	-8	-10	-12	-14	-16	-18	-20	-22	-24						.213	.212	.250	.125	.28	.040
#6-32	CF4-SO 632	-4	-6	-8	-10	-12	-14	-16	-18	-20	-22	-24	-26	-28	-30	-32	-34	.213	.212	.250	.156	.28	.040
	CF4-SO 8632	-4	-6	-8	-10	-12	-14	-16	-18	-20	-22	-24	-26	-28	-30	-32	-34	.281	.280	.312	.156	.33	.050
#8-32	CF4-SO 832	-4	-6	-8	-10	-12	-14	-16	-18	-20	-22	-24	-26	-28	-30	-32	-34	.281	.280	.312	.188	.33	.050
#10-32	CF4-SO 1032	-4	-6	-8	-10	-12	-14	-16	-18	-20	-22	-24	-26	-28	-30	-32	-34	.281	.280	.312	.203	.33	.050
D ± .0156		None			.187			.312			.437												

All Measurements In Millimeters.

Thread Size	Part Number	L Length +.05 -.13 mm												A Dim. +.00 -.13	H Hex Dim. (Nom.)	C Counter-bore ±.13	Min.	Min.					
		3	4	6	8	10	12	14	16	18	20	22	25										
M3x0.5	CF4-SO M3	-3	-4	-6	-8	-10	-12	-14	-16	-18								4.22	4.2	4.8	3.25	6	1.02
	CF4-SO 3.5M3	-3	-4	-6	-8	-10	-12	-14	-16	-18								5.41	5.39	6.4	3.25	7.1	1.02
M3.5x0.6	CF4-SO M3.5	-3	-4	-6	-8	-10	-12	-14	-16	-18	-20	-22	-25					5.41	5.39	6.4	3.9	7.1	1.02
M4x0.7	CF4-SO M4	-3	-4	-6	-8	-10	-12	-14	-16	-18	-20	-22	-25					7.14	7.12	7.9	4.8	8.4	1.27
M5x0.8	CF4-SO M5	-3	-4	-6	-8	-10	-12	-14	-16	-18	-20	-22	-25					7.14	7.12	7.9	5.35	8.4	1.27
D ± .4		None			4.0			8.0			11.0												

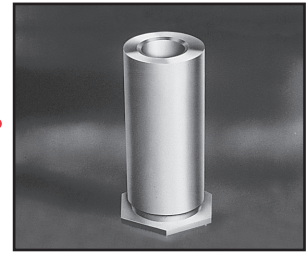
Continued on next page.



Self-Clinching Standoffs

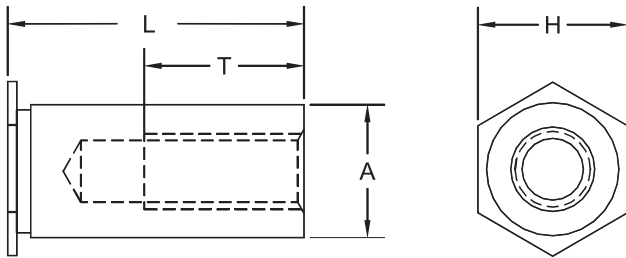
Series CF4-BSO

(400 Series Blind Standoffs)



Continued from previous page.

CF4-BSO Standoffs are designed to be pressed into round holes in stainless steel material as thin as .040 (1mm). The blind-hole versions are available in a choice of inch and metric sizes.



Blind Threads

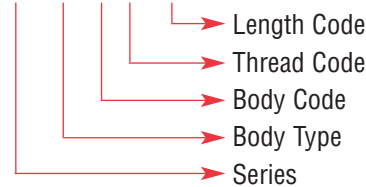
Series	Material	Finish
CF4-BSO	400 Series Stainless Steel	Passivated ASTM A380

Thread: Internal 2B, ANSI B1.1 (6H, ANSI/ASME B1.13M).

Use in: Materials with Rockwell Hardness of B88 or less.

Part Number Structure:

CF4-BSO 6440-10



All Measurements In Inches.

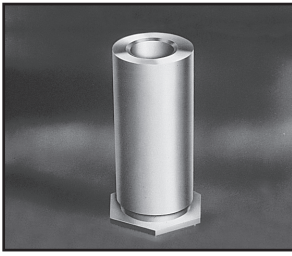
Dimensions & Specifications

Thread Size	Part Number	L Length +.002 -.005 in.													A Dim. +.000 -.005	H Hex Dim. (Nom.)	Min.	Min.	
		.312	.375	.437	.500	.562	.625	.687	.750	.812	.875	.937	1.00	1.062					
#4-40	CF4-BSO 440	-10	-12	-14	-16	-18	-20	-22	-24						.166	.165	.187	.23	.040
	CF4-BSO 6440	-10	-12	-14	-16	-18	-20	-22	-24	-26	-28	-30	-32	-34	.213	.212	.250	.28	.040
#6-32	CF4-BSO 632	-10	-12	-14	-16	-18	-20	-22	-24	-26	-28	-30	-32	-34	.213	.212	.250	.28	.040
	CF4-BSO 8632	-10	-12	-14	-16	-18	-20	-22	-24	-26	-28	-30	-32	-34	.281	.280	.312	.33	.050
#8-32	CF4-BSO 832	-10	-12	-14	-16	-18	-20	-22	-24	-26	-28	-30	-32	-34	.281	.280	.312	.33	.050
#10-32	CF4-BSO 1032	-10	-12	-14	-16	-18	-20	-22	-24	-26	-28	-30	-32	-34	.281	.280	.312	.33	.050
T Dim. Min.		.156		.187		.250			.375										

All Measurements In Millimeters.

Thread Size	Part Number	L Length +.05 -.13 mm										A Dim. +.00 -.13	H Hex Dim. (Nom.)	Min.	Min.			
		6	8	10	12	14	16	18	20	22	25							
M3x0.5	CF4-BSO M3	-6	-8	-10	12	-14	-16	-18						4.22	4.2	4.8	6	1.02
	CF4-BSO 3.5M3	-6	-8	-10	12	-14	-16	-18						5.41	5.39	6.4	7.1	1.02
M3.5x0.6	CF4-BSO M3.5	-6	-8	-10	12	-14	-16	-18	-20	-22	-25			5.41	5.39	6.4	7.1	1.02
M4x0.7	CF4-BSO M4	-6	-8	-10	12	-14	-16	-18	-20	-22	-25			7.14	7.12	7.9	8.4	1.27
M5x0.8	CF4-BSO M5	-6	-8	-10	12	-14	-16	-18	-20	-22	-25			7.14	7.12	7.9	8.4	1.27
T Dim. Min.		3.2		4.0		5.0		6.5			9.5							

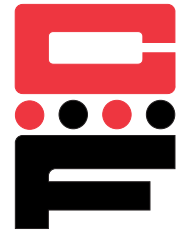
Continued on next page.



Continued from previous page.

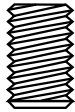
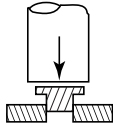
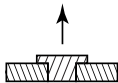
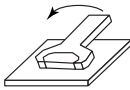
Self-Clinching Standoffs

Series CF4-SO, CF4-BSO (400 Series Standoffs)

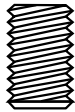
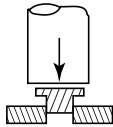
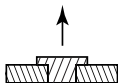
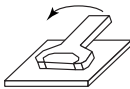


Dimensions & Specifications

Sheet Material: .050 in. 300 Series Stainless Steel

INCH (in.)						
	Thread Code	Installation Force (lbs.)	Pushout (lbs.)	Torque-out (in.-lbs.)	Pull Through (lbs.)	Rec. Tightening Torque Max. (in.-lbs.)
	440	5500	330	16	595	4.75
	6440	9500	640	16	675	4.75
	632	9500	640	29	675	8.75
	8632	10500	895	29	1390	8.75
	832	10500	895	52	1515	18
	1032	10500	895	70	1365	32

Sheet Material: 1.3mm 300 Series Stainless Steel

METRIC (mm)						
	Thread Code	Installation Force (kN)	Pushout (N)	Torque-out (N•m)	Pull Through (N)	Rec. Tightening Torque Max. (N•m)
	M3	24.5	1467	1.81	2645	.55
	3.5 M3	42.3	2847	3.00	3000	.55
	M3.5	42.3	2847	3.00	3000	.91
	M4	46.7	3981	6.29	6450	2
	M5	46.7	3981	8.85	6070	3.6

RECOMMENDED INSTALLATION PROCEDURE

1. Insert Standoff through hole in sheet into anvil.
2. Apply sufficient squeezing force between parallel surfaces of punch and anvil to embed hex head flush in sheet. Avoid excessive pressure.

