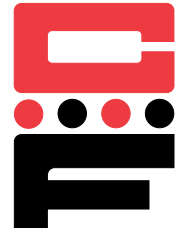


Self-Clinching Standoffs

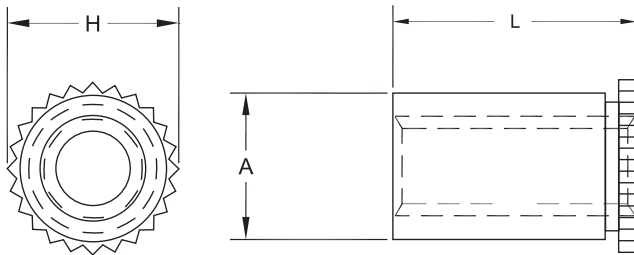
Series CF40 & CF40S

(Miniature Standoff)



CF40 & CF40S Miniature Standoffs are designed to be used in limited space applications. They are ideal for securing D-sub connectors to enclosure backplanes and provide a flush mounting surface for RFI/EMI gaskets.

Series	Material	Finish
CF40	Heat-treated Carbon Steel	Zinc* Yellow
CF40S	300 Series Stainless Steel	Passivated ASTM A967



*See Finish Spec. on Page 6.

Thread: Internal 2B ANSI B1.1 (6H, ANSI/ASME B1.13M).

Use in: CF40 for Material with HRB-80 or less.

CF40S for Material with HRB-70 or less.

Part Number Structure:

CF40 - 440 - .250



All Measurements In Inches.

Dimensions & Specifications									
Thread Size	Part Number		L Length +.002 -.005 in.		A Dim. Max.	H Dim. (Nom.)	Min.	Min.	
	Steel	Stainless Steel							
#4-40	CF40-440	CF40S-440	-.250	-.275	.166	.165	.194	.126	.037-.250

All Measurements In Millimeters.

Dimensions & Specifications									
Thread Size	Part Number		L Length +.05 -.13mm		A Dim. Max.	H Dim. (Nom.)	Min.	Min.	
	Steel	Stainless Steel							
M3	CF40-M3	CF40S-M3	-6.35	-7	4.22	4.2	4.92	3.2	.94-6.35

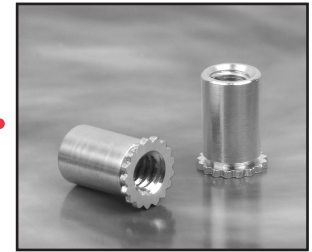
Continued on next page.



Self-Clinching Standoffs

Series CF40 & CF40S

(Miniature Standoff)



Continued from previous page.

Installation & Performance Data

INCH (in.)	Sheet Material: .040 in. Cold-rolled Steel						Sheet Material: .040 in. 5052-H34 Aluminum					
	Thread Code	Material	Installation Force (lbs.)	Pushout (lbs.)	Torque-out (in.-lbs.)	Rec. Tightening Torque Max. (in.-lbs.)	Thread Code	Material	Installation Force (lbs.)	Pushout (lbs.)	Torque-out (in.-lbs.)	Rec. Tightening Torque Max. (in.-lbs.)
440		Steel	1300	75	10	3.8	440	Steel	1000	50	10	3.8
		Stainless Steel	1300	75	10	3.8		Stainless Steel	1000	50	10	3.8

METRIC (mm)	Sheet Material: 1mm Cold-rolled Steel						Sheet Material: 1mm 5052-H34 Aluminum					
	Thread Code	Material	Installation Force (kN)	Pushout (N)	Torque-out (N•m)	Rec. Tightening Torque Max. (N•m)	Thread Code	Material	Installation Force (kN)	Pushout (N)	Torque-out (N•m)	Rec. Tightening Torque Max. (N•m)
M3		Steel	5.8	334	1.1	.44	M3	Steel	4.5	223	1.1	.44
		Stainless Steel	5.8	334	1.1	.44		Stainless Steel	4.5	223	1.1	.44