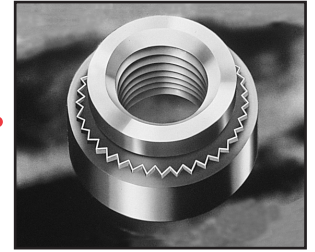


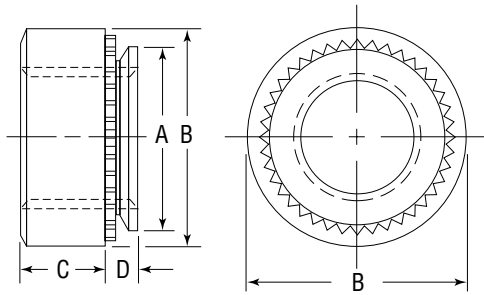


# Self-Clinching Nuts

## Series CA-Aluminum



CA-aluminum self-clinching nuts provide strong load-bearing threads. All Captive Fastener self-clinching nuts fit standard hole sizes and are dimensionally identical to industry standards.

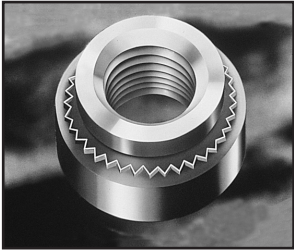


Material: 2024-T4 Aluminum.  
 Finish: None.  
 Thread: Class 2B, MIL-S-7742; (6H ISO metric).  
 Use in: Materials with Rockwell Hardness of B-50 or less.

### Dimensions & Specifications

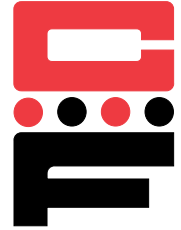
Thread Size	Part Number	D Max.	Min.	+.003 in. -.000	A Max.	B ± 0.01 in.	C ± 0.01 in.	Min.	INCH (in.)
#2-56	CA256-1	.038	.040	.166	.165	.25	.07	.19	
	CA256-2	.054	.056						
#4-40	CA440-1	.038	.040	.1875	.187	.25	.09	.22	
	CA440-2	.054	.056						
#6-32	CA632-1	.038	.040	.213	.212	.28	.09	.27	
	CA632-2	.054	.056						
#8-32	CA832-1	.038	.040	.234	.233	.31	.13	.28	
	CA832-2	.054	.056						
#10-24	CA1024-1	.038	.040	.296	.295	.38	.16	.31	
	CA1024-2	.054	.056						
#10-32	CA1032-1	.038	.040						
	CA1032-2	.054	.056						
1/4-20	CA420-1	.054	.056	.344	.343	.44	.17	.34	
	CA420-2	.087	.091						
	CA420-3	.120	.125						

Continued on next page.

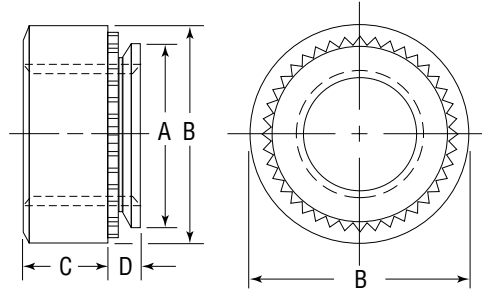


# Self-Clinching Nuts

## Series CA-Aluminum



Continued from previous page.



### Dimensions & Specifications

Thread Size	Part Number	D Max.	Min.	+ .08 mm -.00	A Max.	B ± 0.25 mm	C ± 0.25 mm	Min.	
M2 x 0.4	CAM2-1	0.97	1.0	4.25	4.22	6.3	1.5	4.8	
	CAM2-2	1.37	1.4						
M3 x 0.5	CAM3-1	0.97	1.0	4.75	4.73	6.3	2.0	5.6	
	CAM3-2	1.37	1.4						
M3.5 x 0.6	CAM3.5-1	0.97	1.0	5.4	5.38	7.1	2.0	6.9	
	CAM3.5-2	1.37	1.4						
M4 x 0.7	CAM4-1	0.97	1.0	6.0	5.97	7.9	3.0	7.1	
	CAM4-2	1.37	1.4						
M5 x 0.8	CAM5-1	0.97	1.0	7.5	7.47	9.5	3.8	7.9	
	CAM5-2	1.37	1.4						
M6 x 1.0	CAM6-1	1.37	1.4	8.75	8.72	11.1	4.1	8.6	
	CAM6-2	2.21	2.3						